



2014

PRO WALL-HANGED FAUCET

The wall mounted tap from the PRO Public series is suitable for all public places where you need to be able to tap drinking water

Supplied with the option of the handle as tempo stop, normal push button, classic handle or opening via key. It has an expression that makes it look like a natural part of any facade.

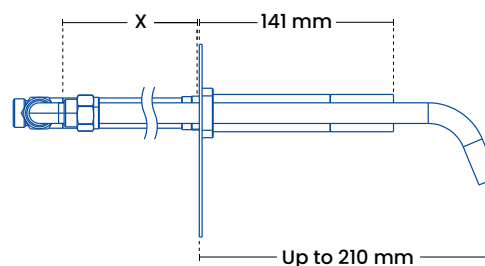
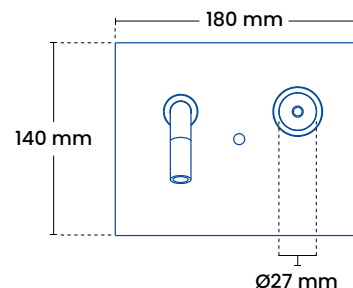
Produced in solid stainless steel and hand assembled in Denmark. Thus, you are guaranteed a frost-free solution that lasts year after year.

PRO PUBLIC WALL MOUNTED TAP VALVE

Frostline is manufactured in Denmark and today has more than 25 years of experience. We offer a wide range of frost-free outdoor products in beautiful design, high quality and with great functionality. The faucet works by a self-draining mechanical valve emptying the product of water after use, so you can shower all year round. Our products do not require the use of electricity to ensure frost-freeness, and are made of stainless steel, so environmentally friendly in every way.

Important!

For the function, it is important that the pipe which is led through the wall falls 2-3 per mille towards the facade, so that the fixture can be emptied of water.



Glass blown

Specifications

Installation target

Luminaire center distance	153 mm
Back plate	W 180 mm x h 140 mm
Connection	½"

Product dimensions

Total height	140 mm
Total width	180 mm
Tappet	Island 15
Armature	Island 27

Packaging

Measure H-B-D	565 x 200 x 85 mm
Weight	2.5 kg

Frostline valve

Capacity	9 l/min. 2-6 bars
O-rings	Gasket set 9010

Models

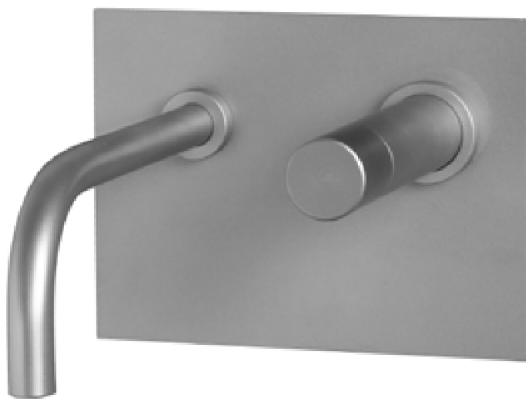
Product	plumbing no.	Wall thickness
2014	743468.314	180 - 220 mm
2014	743468.344	300 - 340 mm
2014	743468.374	420 - 460 mm

See more variants in the price list.

For wall mounting For function and warranty, there are requirements for a frost-free water supply all year round, that the product has a fall of at least 3% towards the outer wall and that a product in standard dimensions is used. Below 5 degrees, no hose nozzles or equipment may be fitted.

2015

PRO PUBLIC WALL MOUNTED TAP VALVE



The wall mounted tap from the PRO Public series is suitable for all public places where you need to be able to tap drinking water.

Supplied with the option of the handle as tempo stop, normal push button, classic handle or opening via key. It has an expression that makes it look like a natural part of any facade.

Produced in solid stainless steel and hand assembled in Denmark. Thus, you are guaranteed a frost-free solution that lasts year after year.

PRO PUBLIC WALL MOUNTED TAP VALVE

Frostline is manufactured in Denmark and today has more than 25 years of experience. We offer a wide range of frost-free outdoor products in beautiful design, high quality and with great functionality. The tap works by a self-draining mechanical valve emptying the product of water after use, so you can shower all year round. Our products do not require the use of electricity to ensure frost-freeness, and are made of stainless steel, so environmentally friendly in every way.

Important!

For the function, it is important that the pipe which is led through the wall falls 2-3 per mille towards the facade, so that the fixture can be emptied of water.

Specifications

Installation target

Luminaire center distance	153 mm
Back plate	W 180 mm x h 140 mm
Connection	½"

Product dimensions

Total height	140 mm
Total width	180 mm
Tappet	Ø 15 mm
Armature	Ø 27 mm

Packaging

Measure H-B-D	565 x 200 x 85 cm
Weight	2.5 kg

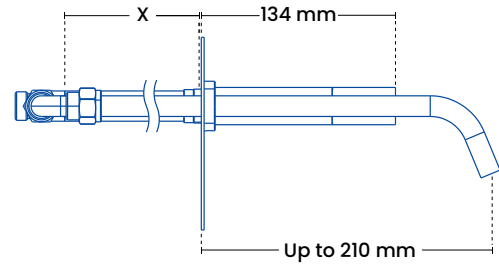
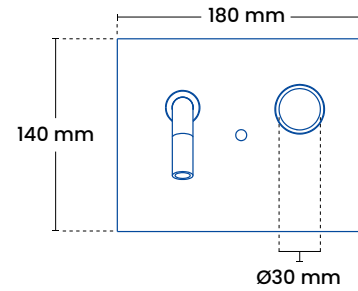
Frostline valve

Capacity	23 l/min. Max 6 bar
O-rings	Gasket set 9010

Models

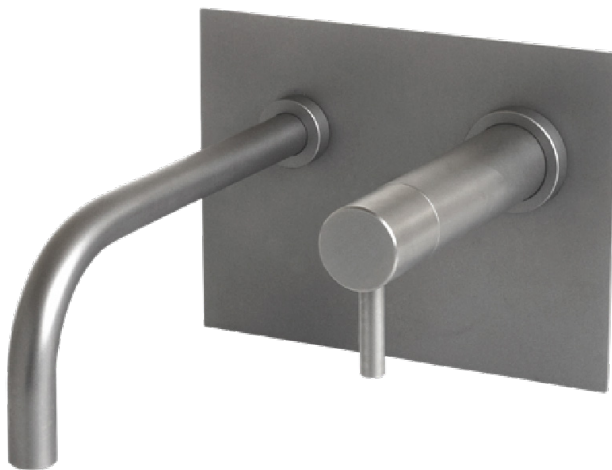
Product	plumbing no.	Wall thickness
2015	743468.514	180 - 220 mm
2015	743468.544	300 - 340 mm
2015	743468.574	420 - 460 mm

See more variants in the price list.



Glass blown

For wall mounting For function and warranty, there are requirements for a frost-free water supply all year round, that the product has a fall of at least 3% towards the outer wall and that a product in standard dimensions is used. Below 5 degrees, no hose nozzles or equipment may be fitted.



2016

PRO PUBLIC WALL MOUNTED TAP VALVE

The wall mounted tap from the PRO Public series is suitable for all public places where you need to be able to tap drinking water.

Supplied with the option of the handle as tempo stop, normal push button, classic handle or opening via key. It has an expression that makes it look like a natural part of any facade.

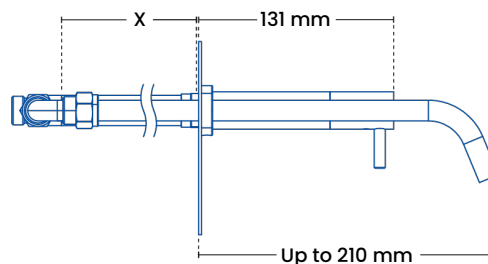
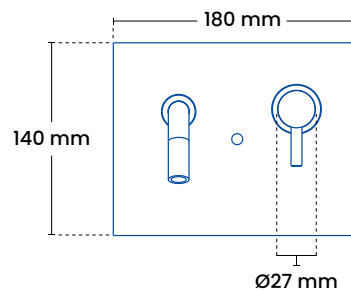
Produced in solid stainless steel and hand assembled in Denmark. Thus, you are guaranteed a frost-free solution that lasts year after year.

PRO PUBLIC WALL MOUNTED TAP VALVE

Frostline is manufactured in Denmark and today has more than 25 years of experience. We offer a wide range of frost-free outdoor products in beautiful design, high quality and with great functionality. The tap works by a self-draining mechanical valve emptying the product of water after use, so you can shower all year round. Our products do not require the use of electricity to ensure frost-freeness, and are made of stainless steel, so environmentally friendly in every way.

Important!

For the function, it is important that the pipe which is led through the wall falls 2-3 per mille towards the facade, so that the fixture can be emptied of water.



Glass blown

Specifications

Installation target

Luminaire center distance	153 mm
Back plate	W 180 mm x h 140 mm
Connection	½"

Product dimensions

Total height	140 mm
Total width	180 mm
Tappet	Ø 15 mm
Armature	Ø 27 mm

Packaging

Measure H-B-D	565 x 200 x 85 cm
Weight	2.5 kg

Frostline valve

Capacity	9 l/min. 2-6 bars
O-rings	Gasket set 9010

Models

Product	plumbing no.	Wall thickness
2016	743468.114	180 - 220 mm
2016	743468.144	300 - 340 mm
2016	743468.174	420 - 460 mm

See more variants in the price list.

For wall mounting For function and warranty, there are requirements for a frost-free water supply all year round, that the product has a fall of at least 3% towards the outer wall and that a product in standard dimensions is used. Below 5 degrees, no hose nozzles or equipment may be fitted.